

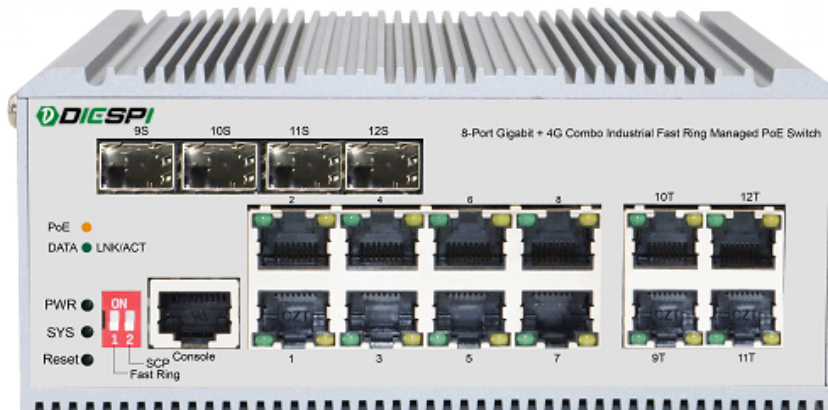
سوییچ صنعتی لایه 2

Model:SW-IN824GA-4S-L2

دارای 8 پورت شبکه POE 1000Mbps

دارای 4 پورت GTP/ SFP/Combo 4

سوییچ مدیریتی



ویژگی ها

- دارای خروجی ماکزیمم 30 وات برای هر پورت شبکه
- پشتیبانی از مسیریابی استاتیک QoS, VLAN
- دارای مدیریت از راه دور از طریق SSH, Telnet, CLI
- تحمل دما از -40 تا 75 درجه سانتی گراد
- پشتیبانی از استاندارد های IEEE802.3, IEEE802.3u, IEEE802.3ab, IEEE802.3z, IEEE802.3x
- قابلیت ارسال دیتا و POE در مسافت بالای 100 متر
- پشتیبانی از آپلود و دانلود فایل از طریق پروتکل های TFTP
- پشتیبانی از توپولوژی رینگ
- نمایش وضعیت سوییچ از طریق چراغ های روی پنل
- ظرفیت سوییچ 24 Gbps
- 185 W

3 سال
گارانتی طلایی
تعویض

Model	SW-IN824GA-4S-L2
Standard	IEEE 802.3, IEEE 802.3u, IEEE 802.3ab, IEEE 802.3z, IEEE 802.3x, IEEE 802.1X, IEEE 802.1q, IEEE 802.1p, IEEE 802.1d, IEEE 802.1w, IEEE 802.3ad, IEEE802.3af, IEEE802.3at
Interface	8*10/100/1000Mbps RJ45 Ports 4*10/100/1000Mbps Combo 1 Console Port
Indicator	PWR, LNK/ACT, PoE, SYS
Network Media	10BASE-T: UTP category 3,4,5 cable (≤100m) 100BASE-TX: UTP category 5, 5e cable (≤100m) 1000BASE-T: UTP category 5e, 5 cable (≤100m) 1000BASE-X: MMF, SMF
MAC Address Table	8K, Auto-learning, Auto-update
Jumbo Frame	9216Byte
Packet Buffer	4.1M bit
Transfer Mode	Store-and-forward
Packet Forward Speed	17.86Mpps
Switching Capacity	24Gbps
Dimensions(L*W*H)	145*109*62mm
Fan Quantity	Fanless
Power Supply	200W
PoE Power Budget	185W
PoE Port	Port1~8
PoE Power On RJ45	Mode A 4/5 (+) ,7/8 (-)
PoE Power Output	30W (MAX)
Green Energy Saving	IEEE 802.3az
Input Power Supply	DC:48-57V
Operating Temperature	-40°C ~ 75 °C
Storage Temperature	-40°C ~ 80 °C
Operating Humidity	5% ~ 95% non-condensing
Storage Humidity	0% ~ 95% non-condensing
Surge Protection	Differential mode ±2KV Common mode ±6KV
MTBF	>100000 hour
Electrostatic Standard	Contact ±6KV , Air ±8KV

L3 Features	DHCP Server	DHCP Server DHCPv6 Server				
	Route	Static Route(IPV4/IPV6) Route Aggregation				
		MAC Address Table	MAC Aging Time MAC Filter MAC Notification			
L2 Features	Basic Management	Console/Telnet/SSH Http/Https,SSL/TLS FTP/TFTP Syslog SNMP(v1/v2c/v3),SNMP Trap SNTP/NTP CPU protect Software/Hardware watchdog Firmware Upgrade/Backup Ping/Traceroute				
		Port Config	Bandwidth Control Flow Control EEE MTU CFM(802.1ag) EFM OAM(802.3ah) DDM Storm Control Port Isolation Port Security Virtual Cable Test ULDP/Cisco UDLD			
			Discovery	LLDP(802.1ab) LLDP-MED		
				(Link Aggregation)	Static LACP(802.3ad) Load Balance(src-mac/dst-mac/src-ip/dst-ip) Max groups and ports per group	
			VLAN		VLAN(802.1Q 4K) Access/Trunk/Hybrid Private VLAN VLAN Filter MAC-based VLAN Protocol-based VLAN IP Subnet-based VLAN Voice VLAN GVRP/GMRP QinQ/Selective-QinQ/Flexible QinQ VLAN Translation/N:1 VLAN Translation Guest VLAN	
					Network Loop Detection	Loopback Detection ERPS
						Spanning Tree
				ARP	Static ARP ARP Scanning Prevention ARP Spoofing Prevention	

		ARP Guard	
		Gratuitous ARP	
		Dynamic ARP Inspection	
		ARP Quantity Control	
IPv4 Related Function	ICMP	Anti ICMP Attack	
		ICMP Rate Limit	
		ICMP Unreachable Drop	
	Control Multicast	DCSCM	
	Multicast VALN	Multicast VALN	
	IGMP	IGMP SNOOPING V1/V2/V3	
		Fast Leave	
		IGMP Proxy	
	DHCP	DHCP Client/BOOTP	
		DHCP Relay	
DHCP Snooping			
DHCP Option 82/43/60/61/67			
IPv6 Related Function	IPv6 Basic	IPv6 ND Snooping	
	DHCPv6	DHCPv6 Relay	
		DHCPv6 Snooping	
		IPv6 SAVI	
		Security RA	
	IPv6 Multicast Routing	MLD v1/V2 Snooping	
	IPv6 Features	SNMP over IPv6 Support	
		HTTP over IPv6 Support	
		SSH over IPv6 Support	
		DNS over IPv6 Support	
		IPv6 ping/traceroute Support	
		IPv6 Telnet Support	
		IPv6 Radius+ Support	
		IPv6 Tacacs+ Support	
		IPv6 SNTP/NTP Support	
		IPv6 FTP/TFTP Support	
		IPv6 IPSec Support	
	IPv6 ACL		
	QoS(Quality Of Service)	Basic	Trust COS/DSCP
			Trust Port
Scheduling		SP	
		WRR	
		WDRR	
PolicyMap Stream		Based on VLAN	
		Based on COS/DSCP	
		Aggregate PolicyMap	
		Ingress PolicyMap	
Policing		CAR Stream Shaping(leak algorithm)	
		Ingress Policing	
Rewrite		COS/802.1p Priority	
		IP Precedence	
		IPv4 DSCP/IPv6 DSCP	
		drop-precedence	
		internal-priority	
		Ingress/Egress Rewrite	
Queuing		DSCP to DSCP mapping	
		DSCP to DP mapping	
	DSCP to Queue mapping		
	COS to DP mapping		
	COS to Queue mapping		
ACL	IP-ACL	SIP/DIP	

ACL	IP-ACL	SIP/DIP
		IP Protocol
		IP Priority(DSCP,TOS, Precedence)
		TCP,UDP src,dst Port
	MAC-ACL	SRC/DST MAC
		VLAN
		COS
		Tag/Untag
	IP-MAC ACL	MAC-ACL and IP-ACL
	User-defined ACL	Base on user defined profile
ACL Features	Based on time period ACL	
	ACL on VLAN	
	Based on ACL Stream	
Security	802.1x	Port Based Authentication
		Support EAPoR
		MAC based Authentication
		Guest VLAN
	MAB	Based on Port Authentication
		Based on MAC Authentication
	MAC Address Count Limit	Based on Port
		Based on VLAN
	IP Address Count Limit	Based on Port
		Based on VLAN
	Access Management	Based on source mac and IP address
	Deny DoS Attack	TCP Flag
		TCP Fragment
IP Segment		
ICMP		
TACACS+	Standard Support	
Radius	Standard Support	
	Client, Support MD5	
SSL	Openssl 1.1.0	
Redundancy Related Function	MRPP	Compatiable ERRP
	ULPP	Uplink Protection Protocol
		Smart Link/Monitor Link
ULSM	Uplink State Monitor	
Mirror	Mirror	Support one to one, multi to one
		Port based mirror, support ingress, egress, and both
		CPU based mirror
		Flow based mirror
		RSPAN
PoE	PoE Management	ON/OFF Config
		Alive Checking for PD
		7/24 On/Off Scheduling